

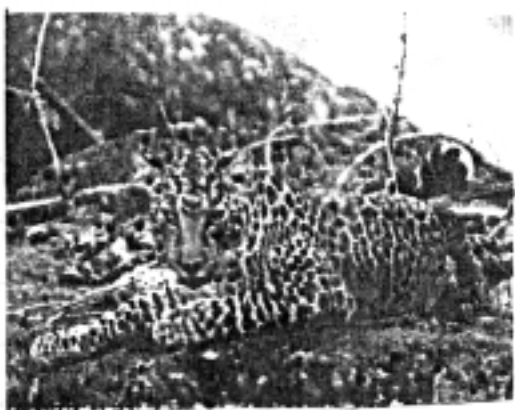
L-7**Conservation of Plants and Animals**

1. Deforestation means
 - a) Cleaning of forests
 - b) To grow plants
 - c) To look after plants
 - d) None of these
2. The plants found in particular area are termed as .
 - a) Fauna
 - b) Flora
 - c) Endemic species
 - d) wild animals
3. Red data book keeps the record of
 - a) Endangered species
 - b) Sanctuary
 - c) Plants
 - d) Animals
4. Project - Tiger means.
 - a) Hunting of tigers
 - b) Rearing of tigers
 - c) Survival & maintenance of tigers
 - d) All of these
5. Write one word for the following sentences.
(Hint : Ecosystem, National Park, Endangered species, Biosphere reserve, Sanctuary)
 - a) Animals whose numbers are diminishing to a level and they might face extinction _____
 - b) All the plants, animals and micro-organism in an area along with non-living component _____.
 - c) An area where animals are protected from any disturbance to them and their habitat _____.
 - d) An area reserved for wild life, where they can freely use the habitats & natural resources _____.
 - e) A large area of protected land for conservation of wild life, plant & animal resources.

6. Do you Know?

- a) How many trees are cut to get 1 tonne paper _____.
- b) How many times a paper can be recycled _____.

7. Some animals are given below which belong to Pachmarhi Biosphere Reserve, identify them and write their names.



.....



.....



.....



.....