

L-8

Cell - Structure and Functions

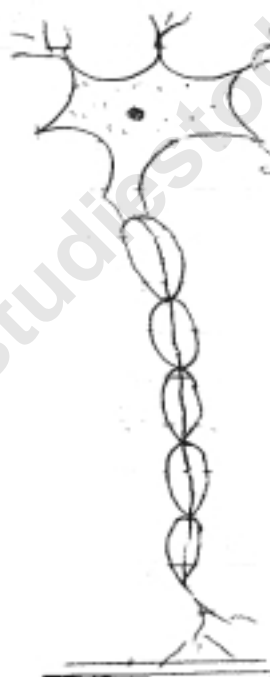
1. Identify the following types of cells :-



----- a)



----- b)



----- (c)

Key - spherical red blood cells of human, nerve cell, Muscle cells

2. The basic unit of life is :

a) Tissue

☐

b) Organ

☐

c) Cell

☐

d) Organ- System

☐

3. The Biggest cell is :

a) Hen's Egg

☐

b) Ostrich egg

☐

c) Nerve cell

☐

d) None of these

☐

4. Cell which changes its shape :-

a) Amoeba

b) WBC

c) Both of these

d) None of these

5. Differentiate :-

Animal Cell

Plant Cell

1)

1)

.....

.....

.....

.....

2)

2)

.....

.....

.....

.....

3)

3)

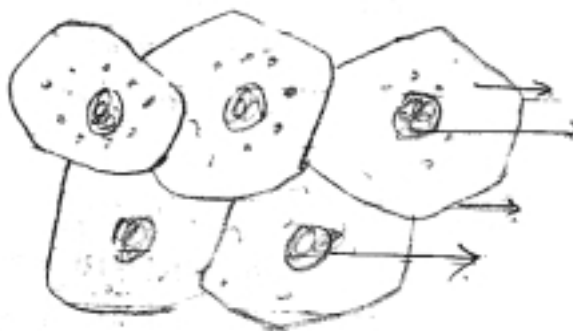
.....

.....

.....

.....

6. Label the following parts of human cheek cells :-

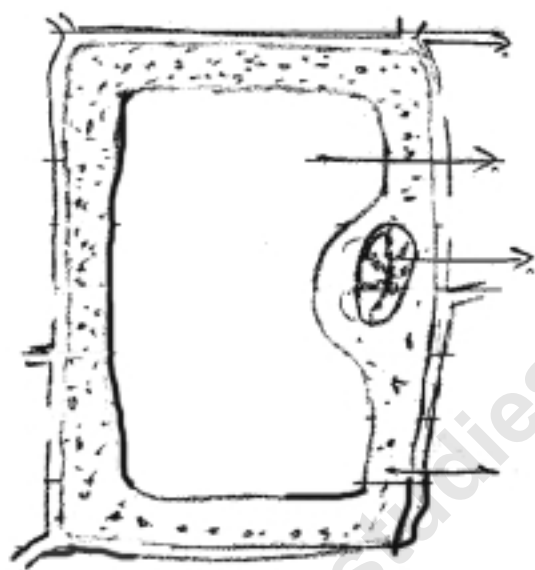


Human cheek cells

7. Give one word for the following :-

- i) Cells having nuclear membrane around the nucleus _____
- ii) Power house of the cell - _____
- iii) Control centre of the cell - _____
- iv) Plastids containing chlorophyll - _____
- v) The membrane which separates nucleus and cytoplasm _____

8. Name different parts of plant cell :-



Plant - Cell