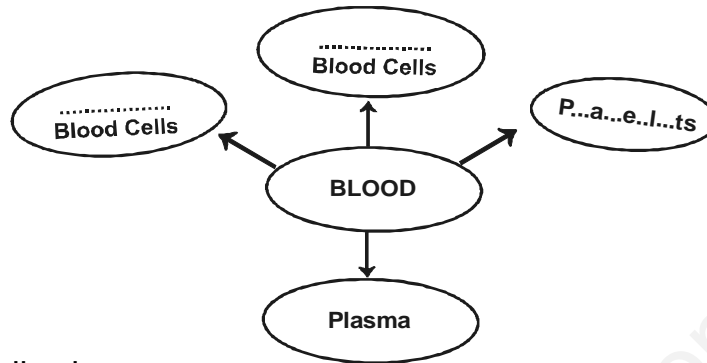


L-11**Transportation in Animals and Plants**

Q.1 We have given one component of blood, write other three in the given spaces.



Q.2 Match the following

Column I

- a) Its presence makes blood appear red.
- b) Fight against germs that may enter our body.
- c) Transport of food.
- d) Transport of water.
- e) Clotting of blood.

Column II

- i) Phloem
- ii) Platelets
- iii) Haemoglobin
- iv) White blood cells
- v) Xylem

Answer :

1.	
2.	
3.	
4.	
5.	

Q.3. Record your own pulse rate per minute.

- a) While resting -- / min
- b) After running for 4-5 minutes - / min

Q.4 Correct the following sentences by replacing the highlighted words.

- a) Arteries are the vessels which carry carbon dioxide rich blood from all parts of the body back to the heart.

Ans. _____

b) Veins carry oxygen-rich blood from the heart to all parts of the body.

Ans. _____

c) Ammonia is the main excretory product of human being.

Ans. _____

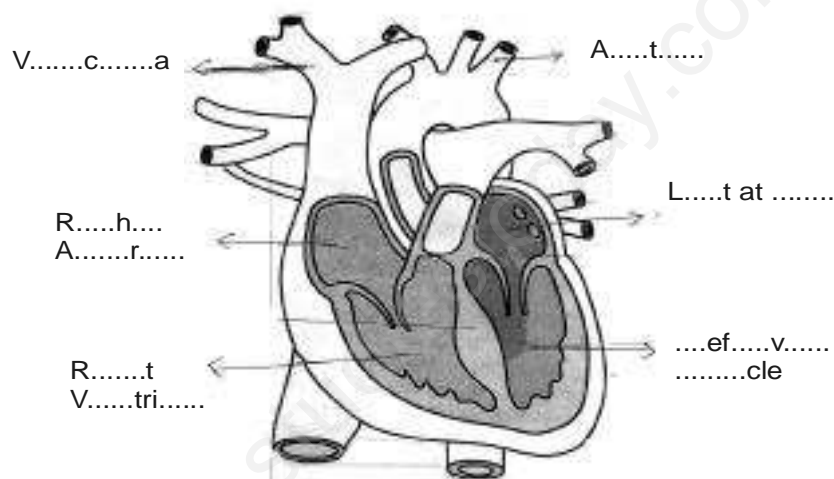
d) Uric acid is the main excretory product of fishes.

Ans. _____

e) Urea is the main excretory product of birds, lizards etc.

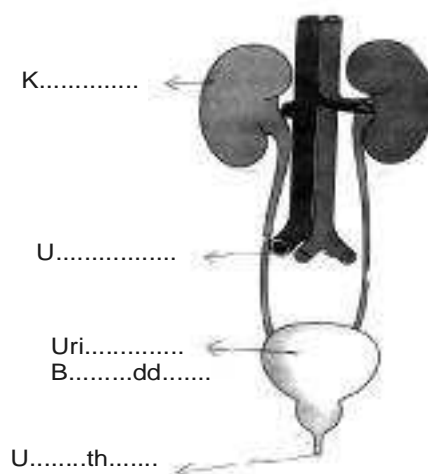
Ans. _____

Q.5. Label the following Diagram (A)



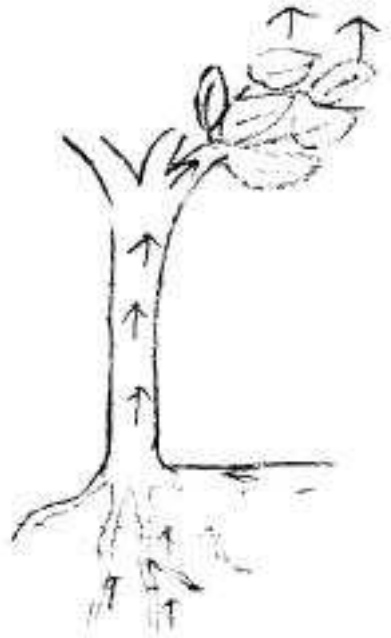
Sections of human heart.

Label the following diagram (B)



Human Excretory System

Observe the given diagram and name the process. (C)



T.... .. n s i t o n