

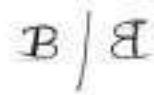
## L-15 LIGHT

Q.1 Fill in the blanks

- a) Light travels along a ..... line.
- b) An image that cannot be obtained on a screen is called a ..... image.
- c) The image formed by ..... mirror is erect, virtual and is of the same size as the object.
- d) An image which can be obtained on a screen is called a ..... image.
- e) A ..... lens can be used as a magnifying glass.

Q.2 Match the following

a)



i) A convex lens

b)



ii) A Plane mirror

c)



iii) A Newton's Disc

d)



iv) A convex mirror

e)



v) A concave mirror

Q.3 Recognize these mirrors and name them.

A)

i)

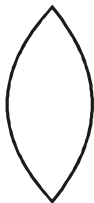


ii)



B) Recognize these lenses and name them.

i)

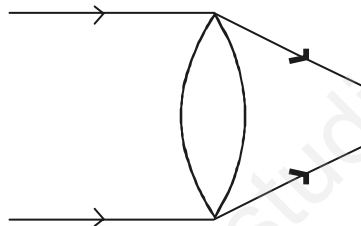


ii)



Q.4 Fill in the blanks.

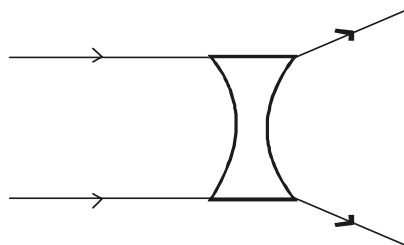
a)



A convex lens converges (Bends inwards) the light falling on it, therefore it is called a .....lens.

(Diverging lens or converging)

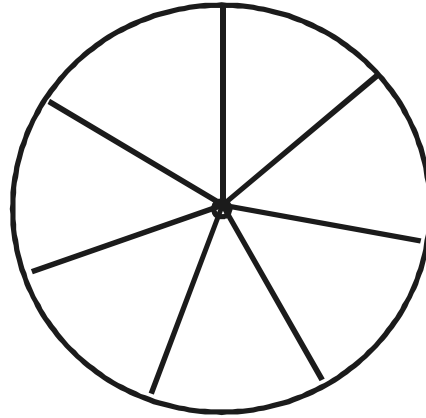
b)



A concave lens diverges (Bends outwards) the light falling on it, therefore it is called a ..... Lens.

(Diverging lens or converging lens)

- Q.5 Here we have made a circle divided into seven segments for you. Paint or paste seven rainbow colours in these segments.



- Q.6 Carefully observe and tick the right choice?

a)



Real image / Virtual image

Images of a candle in a plane mirror



Real image / Virtual image

Image formed by a convex lens



Real image / Virtual image

Image formed by a concave mirror



Real image / virtual image.