

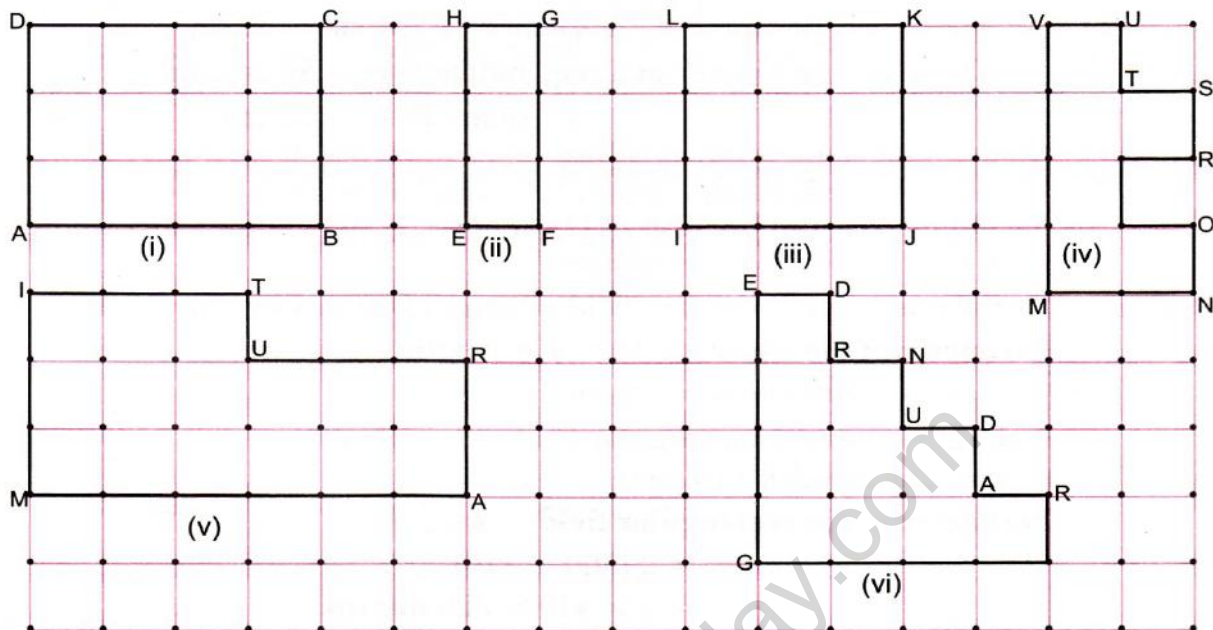
## Canara High School, CBSE

## Worksheet 1

## Mensuration

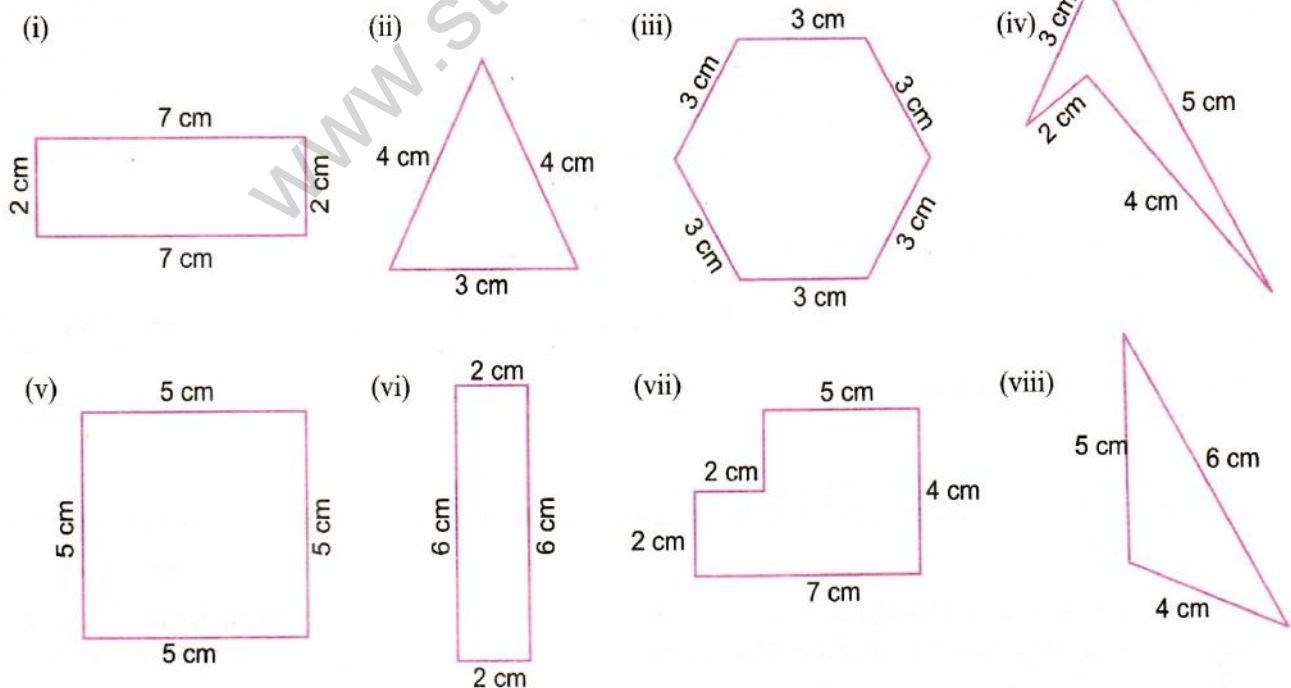
## Sub:Mathematics

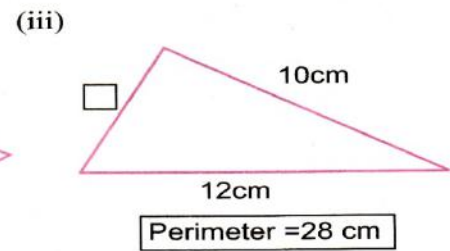
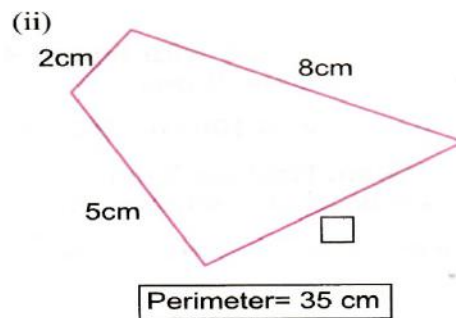
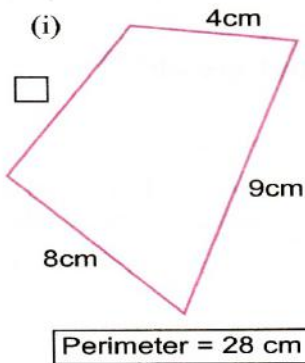
1. Find the perimeter of following shapes given below; if the distance between two consecutive dots is 2 cm.



## Perimeter and Area

2. Find the perimeter of the following figures:



**3. Find the missing lengths:****4. Find the perimeter of following figure by using formula:****5. Fill in the blanks in the following table by calculating the perimeter in each case:**

Side of Square (in cm)	3	5	11	18	25	30	41	55	63	92
Perimeter (in cm)	12	...	...	...	...	...	...	...	...	...

**6. Find the perimeter of these rectangles:**

$l$ (in cm)	2	2	3	5	5	3	4	5	8	7
$b$ (in cm)	3	4	4	4	2	6	6	6	6	9
$p$ (in cm)	10	...	...	...	...	...	...	...	...	...

**7. The perimeter is given. Find the side of these squares:**

$P$ (in cm)	28	40	64	96	120	172	232	300	384	556
Side of square (in cm)	7	...	...	...	...	...	...	...	...	...

8. The breadth of a garden is  $13 \cdot 2$  m and its length is  $15 \cdot 8$  m. What is the perimeter of the garden?
9. Mr. Chintu has a rectangular backyard that is 45 m wide and 46 m long. How much fencing will he need to enclose the yard? If fencing costs Rs 52 per metre, how much will he need to pay?
10. Mr. Ranjan goes on a morning walk everyday in a rectangular park which is 200 m long and 175 m wide. One day Mr. Ranjan walked 5 times around the park. Find the total distance ran by him.
11. Shivani wants to frame 10 pictures, each with length 4 m and breadth 3 m. What length of wood she need to make for the frame?
12. The perimeter of a regular pentagon is 100 cm. How long is each side?
13. The side of a square field is 100 m. Find the length of fence required all around it. If three layers of metal wire has to be used to fence it, what is the length of wire needed?
14. The length and breadth of a rectangular field are 150 m and 125 m, respectively. Find the perimeter of the field.
15. Find the perimeter of each of the following shapes:
  - (i) A triangle of sides 4 cm, 5 cm, and 6 cm
  - (ii) An equilateral triangle of side 6 cm
  - (iii) An isosceles triangle with equal sides 6 cm each and third side 7 cm.
16. In the morning walk, Abhishek took 3 rounds of a rectangular park of length 320 m and breadth 210 m. Find the total distance covered by Abhishek in the morning walk.
17. Prachi wants to frame a photograph of length 40 cm and breadth 25 cm. Find the perimeter of the frame required for this purpose.
18. Veena wants to fix a border on a quilt which is 2 m 50 cm long and 1 m 30 cm broad. Find the length of the border.
19. The edges of a carpet 5 m 20 cm long and 3 m 20 cm broad are to be surrounded by a lace. Find the length of the lace required.
20. Find the perimeter of the rectangle whose breadth is  $53 \cdot 5$  cm and its length is double of the breadth.
21. A piece of string is 36 cm long. What will be the length of each side if the string is used to form:
  - (i) a square?                      (ii) an equilateral triangle?      (iii) a regular hexagon?
22. Find the perimeter of regular hexagon with each side measuring 12 cm.