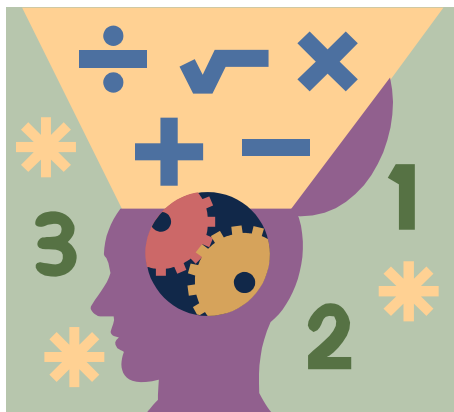




CHENNAI PUBLIC SCHOOL

Anna Nagar Chennai -600 101

MATH HOLIDAY HOME WORK



Class ▶ VI

Date ▶

Name ▶

Roll No. ▶

1. Given below are a few digits , you have to make numbers following the instructions

Given: 0 , 4 , 5 , 6 , 9 , 7 . 1

- (a) Write a number between 5 and 6 million.
- (b) Write a number greater than 80 lakhs
- (c) Write the largest and the smallest 7-digit numbers without repeating the digits.
- (d) Write the largest 7-digit number with 0 at the thousands place.
- (e) Write the smallest 7-digit number with 9 at the hundreds place.

2. Write the following in Roman numerals:

(i) 89 (ii) 762 (iii) 657 (iv) 596 (v) 888 (vi) 944 (vii) 33

3. Write each of the following in Hindu Arabic numerals :

(i) DCCXXIV (ii) CCCLXV (iii) LXIII (iv) CMXCIX (v) MCMVII

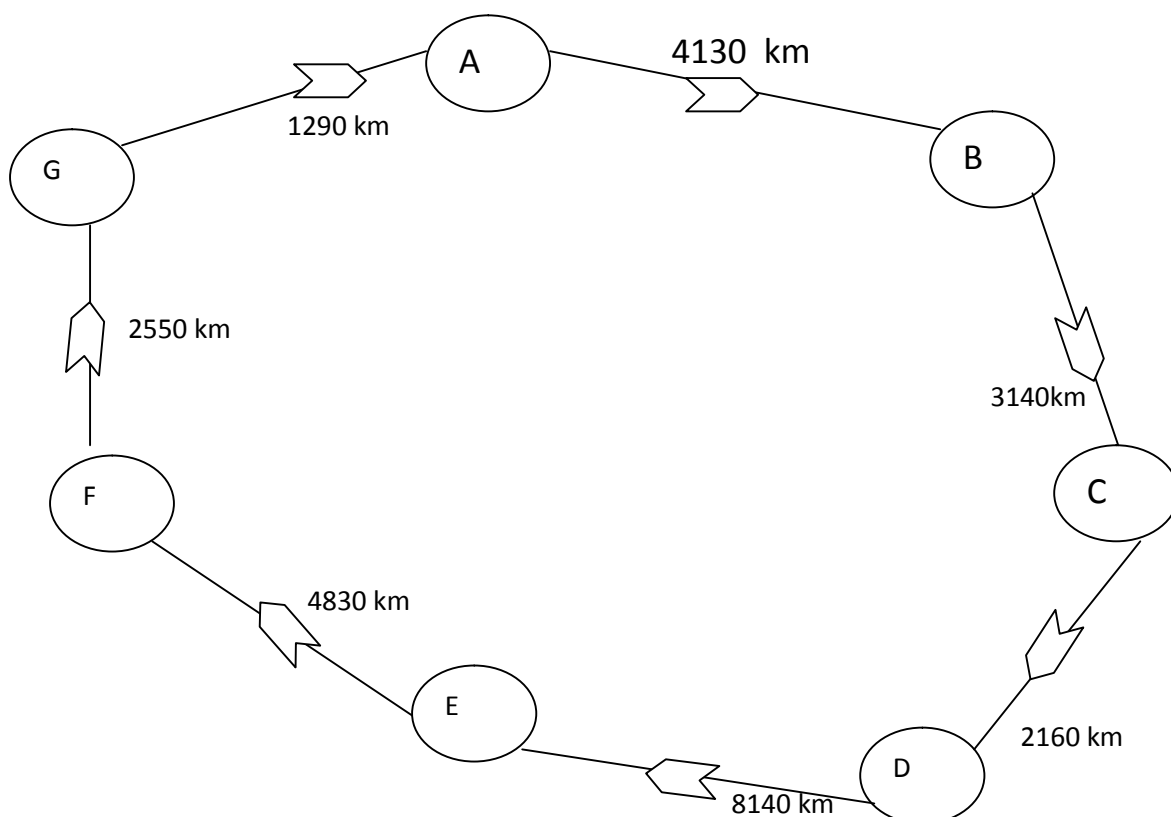
4. Fill in the boxes with $>$, $<$ or $=$ sign.

- (a) XC ☐ LXXIV
- (b) 76 ☐ LXXVI
- (c) LXXXV ☐ CV
- (d) XCIX ☐ 89
- (e) LXVI ☐ 66

5. The number 392492 contains two 9s and two 2s.
 - (i) How many times larger is the first 9 compared to the second 9?
 - (ii) How many times is the second 2 smaller compared to the first 2?
(compare the place values)
6. Name five large cities in India . Find their population . Also find the distance in Km between each pair of these cities.
7. Medicine is packed in boxes, each weighing 4 kg 500g. How many such boxes can be loaded in a van which cannot carry beyond 800 kg?
8. The numbers 3,6,10 can be written in triangular form..Represent the next 5 triangular numbers by drawing dots.
9. Study the following pattern and write 4 more steps:

$$\begin{array}{rcl} 11 \times 11 & = & 121 \\ 111 \times 111 & = & 12321 \\ 1111 \times 1111 & = & 1234321 \end{array}$$

10. A bus started its journey and reached different places with a speed of 60 km/hr . The journey is shown below.
 - (i) Find the total distance covered by the bus from A and D.
 - (ii) Find the total distance covered by the bus from D to G.
 - (iii) Find the total distance covered by the bus , if it starts from A and returns back to A.
 - (iv) Can you find the difference of distance from C to D and D to E.
 - (v) Find out the time taken by the bus to reach
 - (a) A to B
 - (b) C to D
 - (c) E to G
 - (d) total journey



CROSS-NUMBER PUZZLE

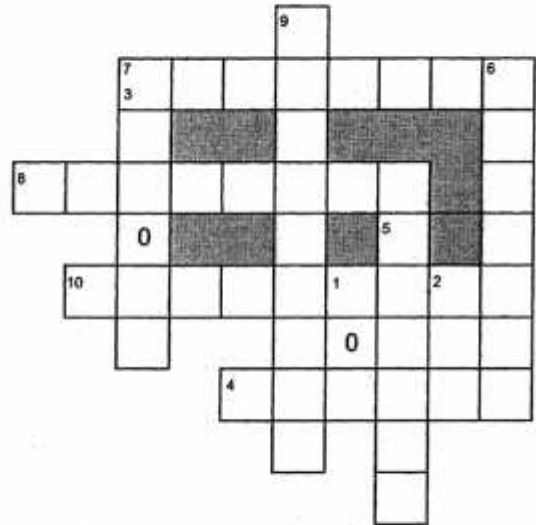
Fit all of the numbers written in words as clues. Using each number once. There is only one way in which all of the numbers will fit.

Across

4. Four hundred forty nine thousand, seven hundred and sixty eight.
7. Twenty million, two hundred eighty three thousand, six hundred and forty two.
8. One crore, ninety three lakh, eighty four thousand and three.
10. Three hundred forty five million, six hundred ninety eight thousand and fifty seven.

Down

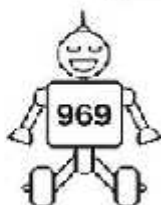
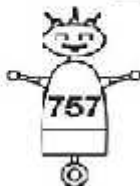
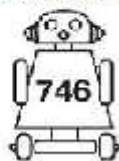
1. Eight hundred and nine.
2. Five hundred and eighty six.
3. Two hundred ninety three thousand and forty two.
5. Thirty eight lakh, two thousand seven hundred and forty eight.
6. Two million six hundred eighty three thousand seven hundred and forty eight.
9. Five hundred eighty three million, seventy nine thousand, six hundred and forty six.



Rounding to the nearest hundred

Rounding Robots

Round the numbers on the robots to the nearest hundred. Draw a line from each robot to the correct battery.



0

100

200

300

400

500

600

700

800

900

1,000



Robots and the battery are to be matched and coloured