

WORK SHEETSUBJECT – MATHEMATICS ( Ch-9 & Ch-10)

Name of the student:- \_\_\_\_\_ CLASS:- IV SECTION :- \_\_\_\_\_

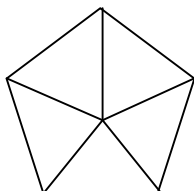
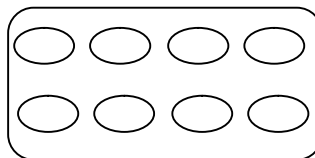
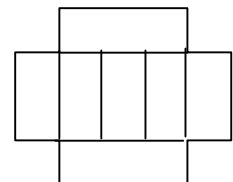
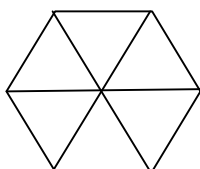
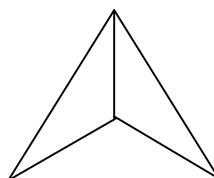
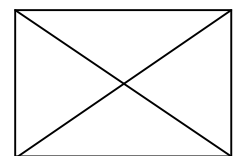
Q1. Use the following price list to find the answers.

Item	Price per kg ( Rs.)
Almond	280
Cashew nut	460
Raisin	360
Blue berries	250
Fig	350

Now answer the following

- a) Maya have Rs 100 she wants to buy  $2\frac{1}{2}$  kg of cashew nuts, is it enough for it?
- b) Akhilesh wants to buy  $\frac{1}{2}$  kg fig,  $\frac{3}{4}$  kg cashew nuts and  $\frac{1}{4}$  kg raisins how much he need to pay for all the items?

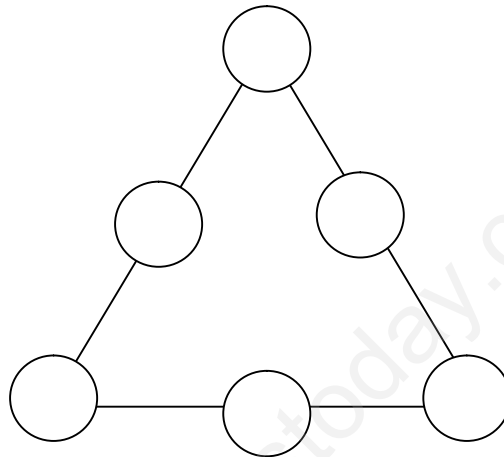
Q2 Colour the parts which is written below:-

 $\frac{1}{5}$  $\frac{3}{4}$  $\frac{3}{7}$  $\frac{5}{6}$  $\frac{2}{3}$  $\frac{1}{4}$

Q3 Complete the following patterns:-

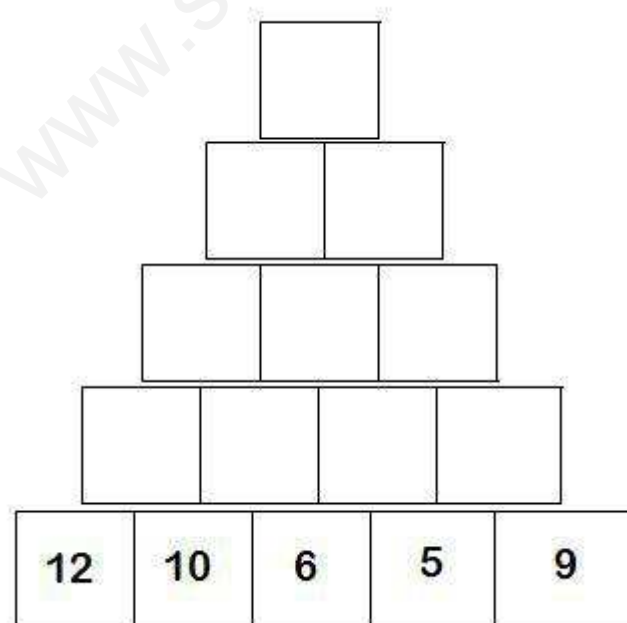
<b>1</b>	<b>4</b>	<b>9</b>				
<b>12</b>	<b>18</b>	<b>24</b>				
<b>35</b>	<b>30</b>	<b>25</b>				
<b>ACB</b>	<b>EGF</b>	<b>HJI</b>				

Q4. Use and fill the numbers from 1-6 so that the sum of each sides of the triangle adds up to 11.



Q5 Complete the following number towers

Rule:- Add 2 numbers below to get the number in the box above them.



\*\*\*\*\*