

Worksheet (Ref No: 1.1, 1.2, 1.3)

1. Can the computer do the work of these devices? Write 'yes' or 'no' in the box.

a.



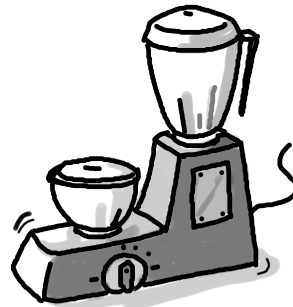
b.



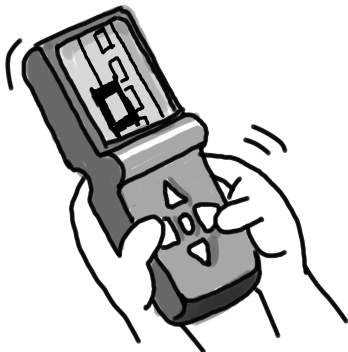
c.



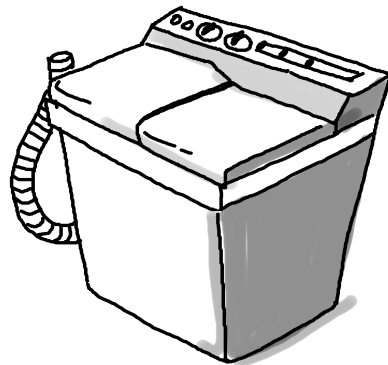
d.



e.



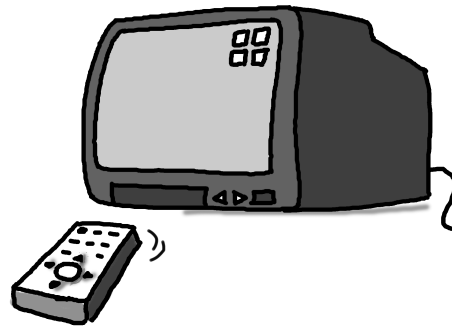
f.



g.



h.



2. How is a computer different from you? Write 'Yes' or 'No' against these questions:

a. Can you move?

Can a computer move?

b. Can you remember things?

Can a computer remember things?

c. Do you forget things?

Does a computer forget things?

d. Can you do sums very quickly?

Can a computer do sums very quickly?

e. Do you get tired?

Does a computer get tired?

f. Do you make mistakes?

Does a computer make mistakes?

g. Can you think?

Can a computer think?

3. Tick the activities that a computer can help us in doing. Mark other activities with an X.

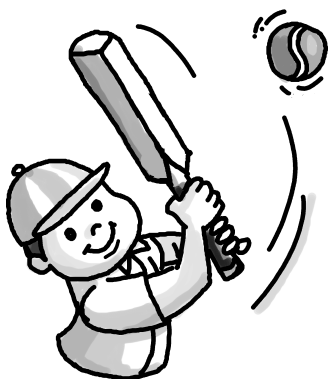
a.

☐

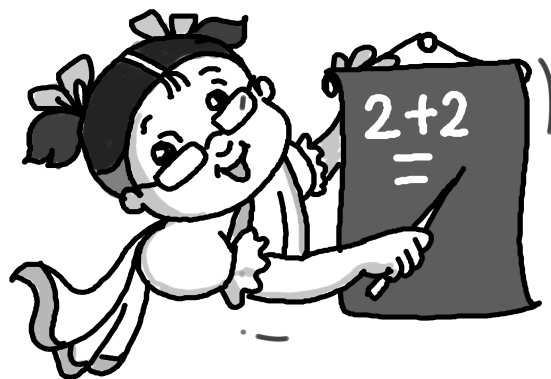
b.

☐

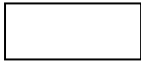
c.

☐

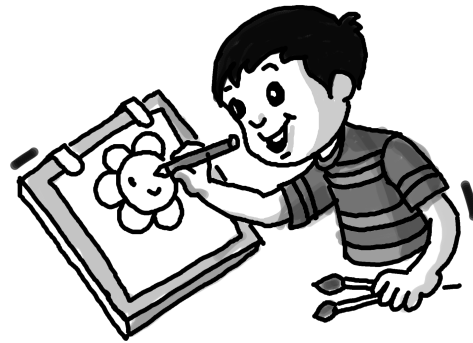
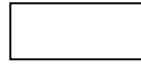
d.

☐

e.



f.



4. Fill in the blanks with the following words:

Tickets	Fee Records	Music	Computers	Letters	Games
----------------	--------------------	--------------	------------------	----------------	--------------

- a. Computers are used in schools for keeping _____ .
- b. _____ help in drawing pictures.
- c. We can play _____ with the help of a computer.
- d. Computers are used in Railway stations for booking _____.
- e. We can write _____ with the help of a computer.
- f. We can listen to _____ on a computer.

5. Say whether the following statements are true or false:

- a. Computers are used by the Police Department.
- b. A computer is a useless machine.
- c. Computers are not used in the Airports.
- d. Computers store a lot of information.
- e. Computers help in drawing cartoons.
- f. Computers make our work harder.

6. Mark the pictures with a tick mark where we use computers and with a "X" mark where we do not.



Hospital



7. Here are some places where computers are used. Find them all!

Hint: Bank, Hospital, School, Airport

S	F	Q	E	M	B	M	H
C	G	A	U	Y	I	R	O
H	N	B	A	N	K	T	S
O	M	C	B	Q	P	N	P
O	U	S	J	S	C	U	I
L	C	Z	M	W	Z	L	T
A	X	V	N	R	V	S	A
A	I	R	P	O	R	T	L